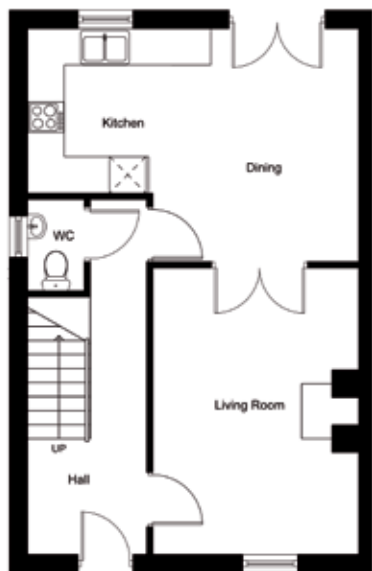


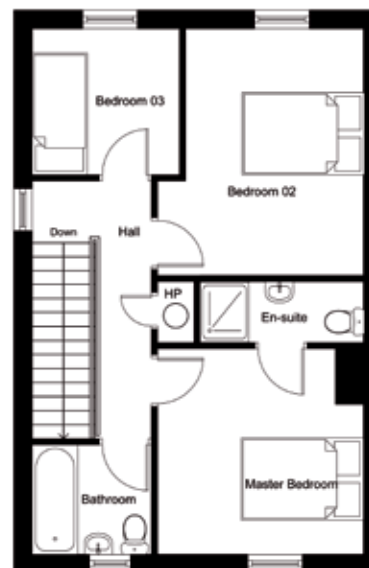


### Ground Floor



Lounge 15'3" x 10'11"  
 Kitchen/Dining 17'8" x 12' 5"  
 W.C.

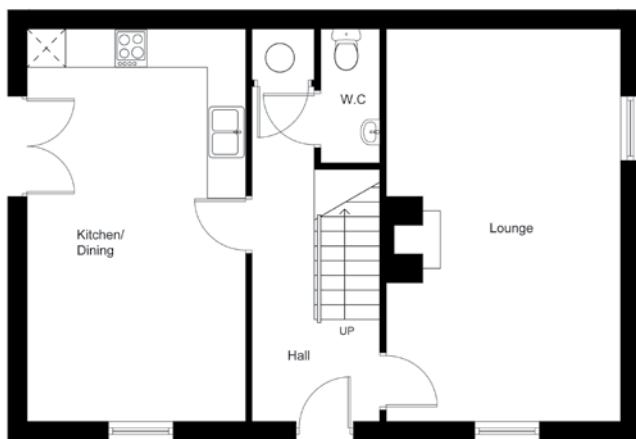
### First Floor



Master Bedroom (Including Ensuite) 10'11" x 10'11"  
 Bedroom 2 13' 1" x 9' 5"  
 Bedroom 3 7' 9" x 7' 8"  
 Bathroom

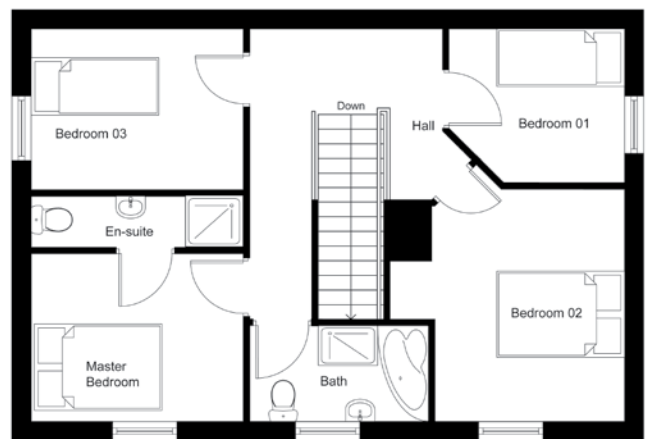


**Ground Floor**



Lounge 20'0" x 11'11"  
 Kitchen/Dining 20'0" x 11' 1"  
 W.C.

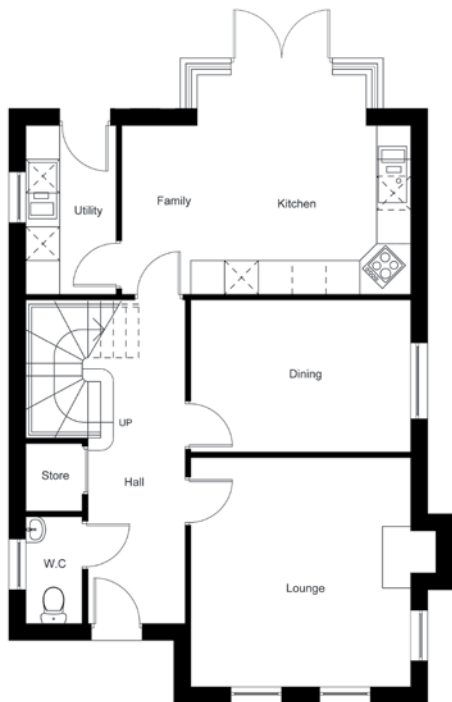
**First Floor**



Master Bedroom 10' 7" x 8' 6"  
 Ensuite 10' 7" x 2' 6"  
 Bedroom 1 8' 8" x 7' 8"  
 Bedroom 2 11' 7" x 9' 7"  
 Bedroom 3 10' 7" x 8' 2"  
 Bathroom

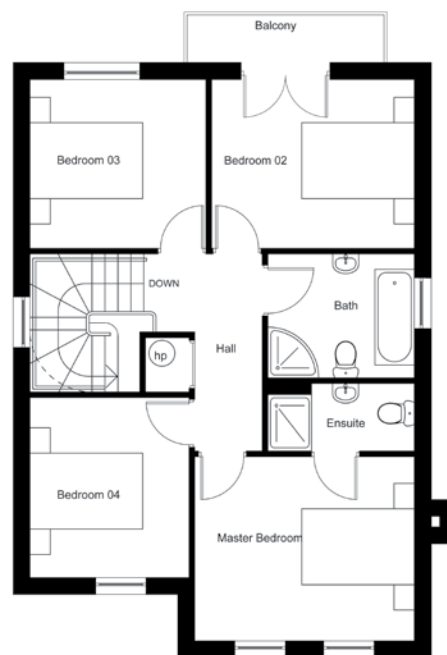


### Ground Floor



Lounge	13'2" x 12'8"
Dining	12'8" x 8' 8"
Kitchen	16'8" x 12'8"
Utility	9' 9" x 5' 1"
W.C.	

### First Floor



Master Bedroom	
(Including Ensuite)	12'8" x 10'7"
Bedroom 2	11'8" x 9' 8"
Bedroom 3	10'1" x 9' 8"
Bedroom 4	10'1" x 9' 4"
Bathroom	